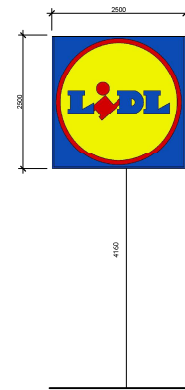


Signage Plan  
1 : 500



1 Flagpole Signage  
1 : 50

- 2,1m x 5,98m Flagpole Signage
  - Aluminium Panels lacquered in RAL 9006 white
  - Aluminium base lacquered in RAL 7024 graphite grey
  - Lidl Logo as lighting box with a thermoformed, curved and extensive printed acrylic logo shell
  - Lettered panels are squared milled with frosted acrylic glass deposited.
  - Galvanised Steel frame construction
  - Concrete base to Structural Engineers design
- Illuminated by SAPS-LEDs  
• Luminance yellow undimmed: Approx 440CD/M²



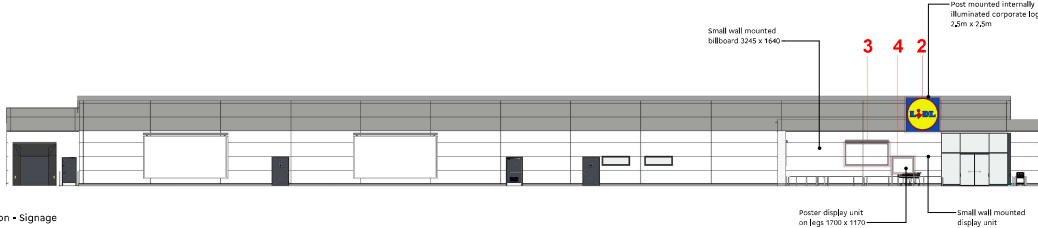
2 Canopy Signage  
1 : 50

- 2,5m Square, aluminium single sided lightbox.
- Aluminium dual case type extrusion.
- Comprising 4 mitred sections with welded inner steel frame.
- Internally illuminated with white fluorescent tubes.
- Facing panel - 5mm opal acrylic 40% light transmission decorated with Lidl logo graphic.



3 Small Billboard  
1 : 50

- 3,245m x 1,64m wall mounted billboard.
- White Aluminium RAL 9006

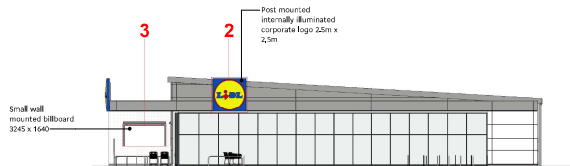


South Elevation - Signage  
1 : 200



4 PDU  
1 : 50

- 1,7m x 2,12m Poster Display Unit.
- Anodised Aluminium
- Integrated Lighting



East Elevation - Signage  
1 : 200



Spaceworks  
Bentley Park Road  
Newcastle upon Tyne  
NE7 7JX  
T: +44 (0)144 800 8860  
www.spacearchitects.co.uk

Project <b>Lidl - Ingleby Barwick</b>					
Drawing Title <b>Proposed Site Signage</b>					
Project No. <b>07381</b>	Drawing No. <b>00-XX-DR-A-99-0001</b>	Substability <b>S3</b>	Revision <b>P9</b>	Scale at A1 <b>As indicated</b>	
File Reference: <b>07381-SPACE-001-SC000-0001-0349</b>					